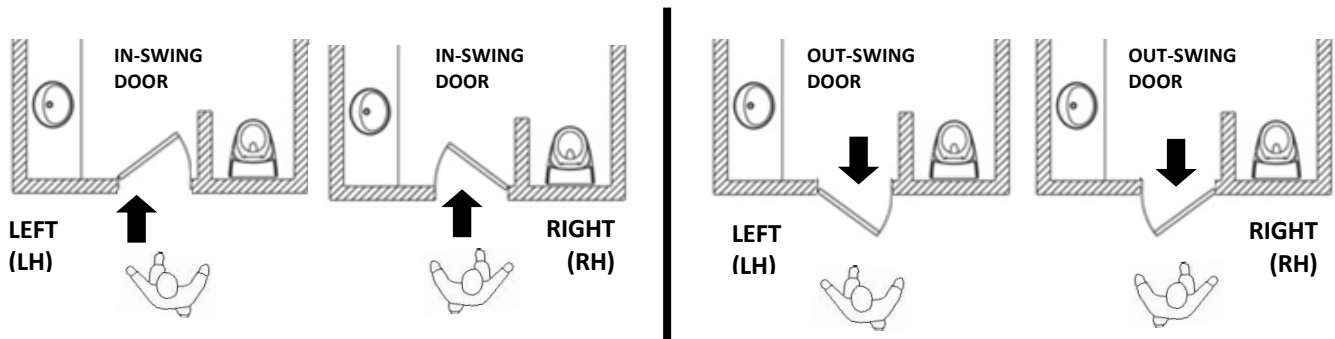


HOW TO BUILD AN EMTEK PRODUCT PART NUMBER



HANDING



HANDING OF DOOR IS DETERMINED FROM THE OUTSIDE LOOKING IN

CRITICAL ORDER INFORMATION (For most Products)

PRODUCT CODE	BACKSET	KNOB/LEVER STYLE	HANDING	FINISH	DOOR THICKNESS
--------------	---------	------------------	---------	--------	----------------

TO BUILD AN EMTEK PART NUMBER using the Price Book, follow the steps below from left to right for each product type. FOR EASE OF ORDERING use the Order Form provided by Emtek in the Price Book.

EXAMPLES:

Keypad Entry Set	Brass Tubular Entrance Handle Set
EMTouch Single Cylinder, 2-3/4" Backset, Turino Lever, Oil Rubbed Bronze Finish	Single Cylinder, 2-3/4" Backset, Basel Lever, Left Handed, Oil Rubbed Bronze Finish.
<u>E4827</u> <u>234</u> <u>I</u> <u>LH</u> <u>US10B</u> , 2-1/4" Thick Door (1) (2) (3) (4) (5) Comments	<u>4817</u> <u>234</u> <u>BA</u> <u>LH</u> <u>US10B</u> , 2-14" Thick Door (1) (2) (3) (4) (5) Comments

ENTRY SET - CONTEMPORARY COLOR COLLECTION

1	2	3	4	5	ADD TO COMMENTS
PRODUCT CODE	BACKSET	LEVER STYLE	HANDING	COLOR INSERT	DOOR THICKNESS

DEAD BOLTS - CONTEMPORARY COLOR COLLECTION

1	2	3	ADD TO COMMENTS
PRODUCT CODE	BACKSET	COLOR INSERT	DOOR THICKNESS

KEYPAD ENTRY SETS

1	2	3	4	5	ADD TO COMMENTS
PRODUCT CODE	BACKSET	KNOB OR LEVER STYLE	HANDING	FINISH	DOOR THICKNESS

KEYPAD DEAD BOLTS

1	2	3	ADD TO COMMENTS
PRODUCT CODE	BACKSET	FINISH	DOOR THICKNESS

KEYPAD LEVER SETS

1	2	3	4	5	ADD TO COMMENTS
PRODUCT CODE	BACKSET	LEVER STYLE	HANDING	FINISH	DOOR THICKNESS

MORTISE - ENTRANCE HANDLE SETS

1	2	3	4	5	6	ADD TO COMMENTS
FUNCTION	PRODUCT CODE	BACKSET	KNOB OR LEVER STYLE	HANDING	FINISH	<ul style="list-style-type: none"> DOOR THICKNESS SPECIFY IF OUT-SWING

HOW TO BUILD AN EMTEK PRODUCT PART NUMBER



MORTISE – KNOB BY KNOB / LEVER BY LEVER

1	2	3	4	5	6	ADD TO COMMENTS
FUNCTION	PRODUCT CODE	BACKSET	KNOB OR LEVER STYLE	HANDING	FINISH	<ul style="list-style-type: none"> • DOOR THICKNESS • SPECIFY IF OUT-SWING

BRASS TUBULAR - ENTRANCE HANDLE SETS

1	2	3	4	5	ADD TO COMMENTS
PRODUCT CODE	BACKSET	KNOB OR LEVER STYLE	HANDING	FINISH	<ul style="list-style-type: none"> • DOOR THICKNESS • INTERCONNECT DEVICE

GRIP BY GRIP - ENTRANCE HANDLE SETS

1	2	3	ADD TO COMMENTS
PRODUCT CODE	BACKSET	FINISH	<ul style="list-style-type: none"> • DOOR THICKNESS

KEY IN KNOB / KEY IN LEVER - ENTRANCE LOCK SETS

1	2	3	4	5	ADD TO COMMENTS
PRODUCT CODE	BACKSET	KNOB OR LEVER STYLE	HANDING	FINISH	<ul style="list-style-type: none"> • DOOR THICKNESS

SINGLE & TWO-POINT LOCKSETS

1	2	3	4	5	ADD TO COMMENTS
PRODUCT CODE	BACKSET	KNOB OR LEVER STYLE	HANDING	FINISH	<ul style="list-style-type: none"> • DOOR THICKNESS

DEADBOLTS

1	2	3	ADD TO COMMENTS
PRODUCT CODE	BACKSET	FINISH	<ul style="list-style-type: none"> • DOOR THICKNESS

SIDEPLATE LOCK SETS

1	2	3	4	5	ADD TO COMMENTS
PRODUCT CODE	BACKSET	KNOB OR LEVER STYLE	HANDING	FINISH	<ul style="list-style-type: none"> • DOOR THICKNESS • INTERCONNECT DEVICE

PASSAGE & PRIVACY SETS

1	2	3	4	5	6	ADD TO COMMENTS
CONCEALED FASTENER	PRODUCT CODE	BACKSET	KNOB OR LEVER STYLE	HANDING	FINISH	<ul style="list-style-type: none"> • DOOR THICKNESS

DOOR ACCESSORIES

1	2
PRODUCT CODE	FINISH

HINGES & HINGE ACCESSORIES

1	2
PRODUCT CODE	FINISH

SCREEN DOOR LOCKS

1	2	3
PRODUCT CODE	HANDING	FINISH

CABINET HARDWARE

1	2
PRODUCT CODE	FINISH

BATH HARDWARE

1	2	3
PRODUCT CODE	ROSETTE	FINISH

MULTI POINT LOCK TRIM

1	2	3	4	ADD TO COMMENTS
PRODUCT CODE	LEVER STYLE	HANDING	FINISH	<ul style="list-style-type: none"> • DOOR THICKNESS

NOTES:

- Plate size such as 1-1/2" x 11" or 2" x 10" are Product Code Specific – Please confirm requirement
- Confirm required door configuration such as 1, 2, 3, 4, 5, 6, or 7.