

RUE

MAGAZINE YOUR PATHWAY TO STYLISH LIVING

Happy at Home

The Best Kitchen Upgrades

PG. 42

100+
Design
Secrets

THE
FUTURE OF
COOKING
IS HOT!

Love it? Buy it. Our Best Bets

H O M E

A T I A S T



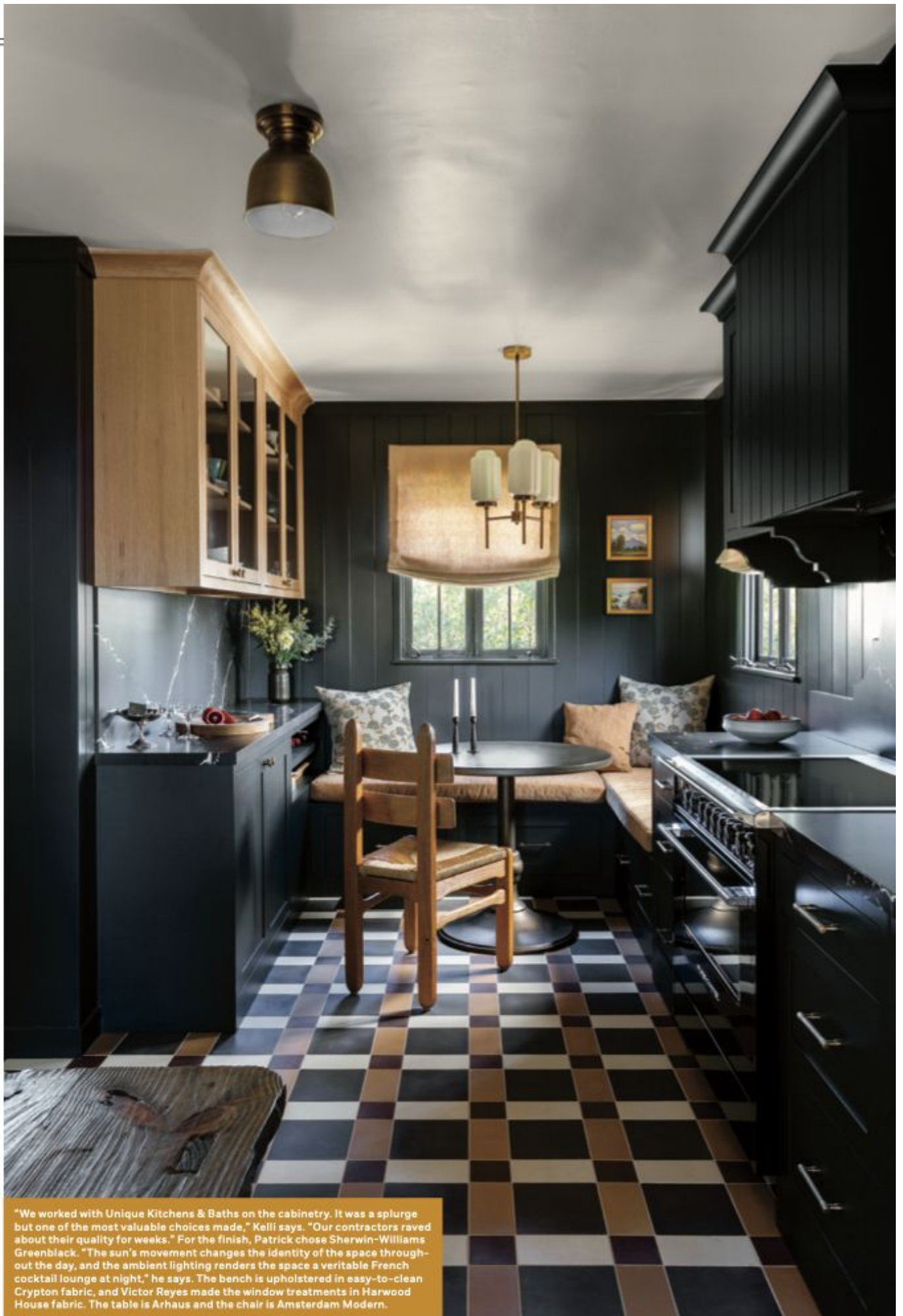
WHAT DOES A DESIGN EDITOR DO AFTER FINALLY LANDING HER DREAM HOME? SHE STARTS REIMAGINING IT, OF COURSE. RUE'S OWN KELLI LAMB WELCOMES US INTO HER FIRST HOME—AND INTO THE DESIGN PROCESS THAT WOULD MAKE IT TRULY HERS.



INTERIOR DESIGN BY PATRICK MAZIARSKI, BEAU GESTE INTERIOR DESIGN

PHOTOGRAPHY BY AMY BARTLAM

CONTRACTOR: MENESES CONSTRUCTION



"We worked with Unique Kitchens & Baths on the cabinetry. It was a splurge but one of the most valuable choices made," Kelli says. "Our contractors raved about their quality for weeks." For the finish, Patrick chose Sherwin-Williams Greenblack. "The sun's movement changes the identity of the space throughout the day, and the ambient lighting renders the space a veritable French cocktail lounge at night," he says. The bench is upholstered in easy-to-clean Crypton fabric, and Victor Reyes made the window treatments in Harwood House fabric. The table is Arhaus and the chair is Amsterdam Modern.



A matte quartz by Cambria—from their new Delamere line—was expertly fabricated by Elite Stone Works LA to create a faux apron sink. The plumbing fixtures are Brizo and the hardware is Emtek. Two integrated Fisher & Paykel dishwashing drawers are to the right, expertly disguised to look like any other cabinetry.

A cabinet by Four Hands serves as a bar and also houses some of Kelli's new favorite finds—such as a bowl from local artist Victoria Morris and serving boards from etoHome—as well as treasures that have moved from house to house. “Tim had that gold leafed saber-tooth tiger skull when I first met him in San Francisco,” Kelli recalls. “And the plain air paintings throughout the home are by his dad, fine artist Jim Lamb.” The chandelier is SohoHome and the dining chairs are Lulu and Georgia.



DREAMS CAN CHANGE. FOLLOW THEM ANYWAY.

When first-time homeowners Kelli and Tim Lamb got the keys to their new house, it wasn't exactly where they thought they'd end up. After diligently saving for more than a decade, their home buying process began in January 2020—and the world had totally changed by March. “We had rented in Silverlake for years, a buzzy neighborhood in Los Angeles, and always planned to stay in the area. The pandemic shifted our priorities tremendously,” Kelli recalls.

Kelli's husband, a successful Production Designer at DreamWorks, had begun working from home and the neighborhood's perks—fabulous restaurants within walking distance, for one—were now inaccessible. “We found ourselves craving more space and less noise,” she says.

A year and a half later—and after they'd lost out on bids for 12 other homes in L.A.'s competitive housing market—they stood, keys in hand, in front of the house that was meant to be: a beautiful Spanish Colonial in Altadena, a peaceful suburb northeast of Los Angeles. Car-free dining-out options were far fewer in the beautiful 'burbs, but they figured they'd just have to bring the fabulous restaurant to their new kitchen.

The 1928 Spanish bungalow had all the architectural magic an editor and an artist could dream of—graceful archways, original beams, a plaster fireplace. That said, the kitchen, bathrooms, and floors had been updated in a way that didn't necessarily complement the architecture. “We made a few quick changes—I updated the exterior lighting with some beautiful fixtures from Hinkley for example—but thought the house deserved a bit of restoration,” Kelli admits.

It was time to call for design backup. “I have been working in this industry long enough that I know my strengths,” Kelli says. “I'm very confident in my ability to tell the story of a home, but designing one is best left to the professionals. I reached



The powder bath is as small as they come, but Duravit's 1930 Handrinse Basin and 1930 Toilet are the perfect fit. The wallpaper is from Astek and was customized to match the floor. "Everyone who enters asks, 'Are those monkeys drinking?' Then the next question is usually, 'Wait, is that a bra?'" I love the element of surprise," Kelli says. The sconce is from Regina Andrew and plumbing fixtures are Brizo.

They outfitted all living spaces in new hardwood flooring—Harbor by Stuga Studio. "It was a shame that the original floors were so damaged, and then covered up with a very gray laminate," Kelli says. "So, we wanted something that felt organic and true to the home." The window treatments are Everhem, sconces are Regina Andrew, and planter is Amsterdam Modern.

out to Patrick Maziarski, an incredibly talented designer who was just launching his own firm, Beau Geste."

Patrick was brought in to fully redesign the kitchen (the bathrooms would have to wait for phase two) while consulting on all spaces of the home. "The biggest hurdle in a whole-home redesign is ensuring a cohesiveness and flow, and thus the concept we generated in the kitchen became a point-of-reference for the entire project," the designer explains. "You'll see a continuity throughout the home, no matter how distinct the air is of any specific room."

In this case, honing the design concept was a group sport—and happily so. "From the project's onset, it was clear that they had envisioned their dream home for years," Patrick says. "With the kitchen specifically, Kelli and Tim wanted the chicest of hotel-lobby bars, where not only

"Every time I come into this room, I'm so happy," Kelli admits. "It's so calm and inviting." She selected a blend of foundational pieces sourced from Mitchell Gold + Bob Williams. "The swivel chairs were an absolute game changer, and our cats love the daybed in front of the big window." To further personalize the room, they added pillows from Filling Spaces and a few antiques, like the brass footman trivet that belonged to Kelli's grandpa.



would cooking take place, but also cocktail-making, coffee-sipping, entertaining, and lounging. Quite simply, it needed to be the hub and heart of the house."

The first items Kelli chose were appliances from Fisher & Paykel. "I had fallen in love with their Classic Induction Range and knew we should design around it," she recalls, excited to make the move away from gas cooking. Tim's must-have was a bold tile—and it almost didn't happen. "One minor incident occurred as a result of our original floor tile choice falling through," Patrick recalls. "We had to make a quick, unexpected decision, and what emerged from an otherwise negative situation was a custom floor by Granda Tile, expertly installed by Meneses Construction, that we all fell head-over-heels for."

Despite having to toss a few extra considerations (read: strong opinions) into the mix, ultimately having a team of creatives led to a distinct—and distinctly beautiful—home. "Kelli's vocation as a design editor allowed us to steer clear of anything we've seen too much of in the design world, and to push boundaries," Patrick says.

Now, the home has regained its Spanish charms—smooth and graceful, with plenty of spice thrown in. The rich palette and strong furniture silhouettes kick in the drama, along with the enveloping comfort the couple was seeking. "I look back at all the places we've lived before and know this is where we're meant to be," Kelli says. "It's been such a great joy to slowly but surely create a forever home that is just right for us."



"I've never actually had my own office before," Kelli says. "So, I wanted to really go for it and unapologetically decorate it for me and only me." Working with California Closets, she turned the corner guest room into a "cloffice"—one part closet, one part office. The wooden chair is Amsterdam Modern.



Most of the living spaces are neutral, so color was a must in the primary bedroom. "Tim did the limewash himself," Kelli says. The color is Reservoir by Portola Paints. Other elements in the room include an Armadillo rug, a Moe's Home bed, Pom Pom at Home bedding, Filling Spaces pillows, and a Zio and Sons for Mitzl lamp.



"This little nook was previously empty, and Patrick suggested early on that we make it a window seat. I call it our smoking bench, even though we don't smoke. It just sounds fab," Kelli says with a laugh. The bench was fabricated by Porta Bella Design Source and upholstered in fabric by Harwood House, the sconces are Arteriors via Lightology, and the woven shades are Everhem.



"Missy Almeister at California Closets suggested I have a magazine shelf, which was an unexpected detail that I'm obsessed with," Kelli says. The walls are limewashed in Antlers by Portola Paints. The accessories have meaning: the small box was a souvenir from a drawing trip Tim took to Mexico City, the photograph is by Amy Bartlam, taken in Kelli's home state of Idaho, and the vase is from Ukrainian brand Gunia Project.



"The first piece of my office puzzle was the rug from Jaipur Living. I spotted it at High Point Furniture Market a few years ago and it was love at first sight," Kelli recalls. The cozy chair is by Universal Furniture, while the twinkly overhead light is Hudson Valley Lighting via Lightology. The pink Everhem window treatments dress up the room, but the art truly makes the space complete. "I listen to the Spice Girls probably every single Friday," Kelli says. "The nostalgia is such a mood booster! I see a lot of art featuring classic rock artists and icons—I almost bought a print of Stevie Nicks—but the Spice Girls defined my youth. And as I always say, if you love it, it will look perfect in your home."